

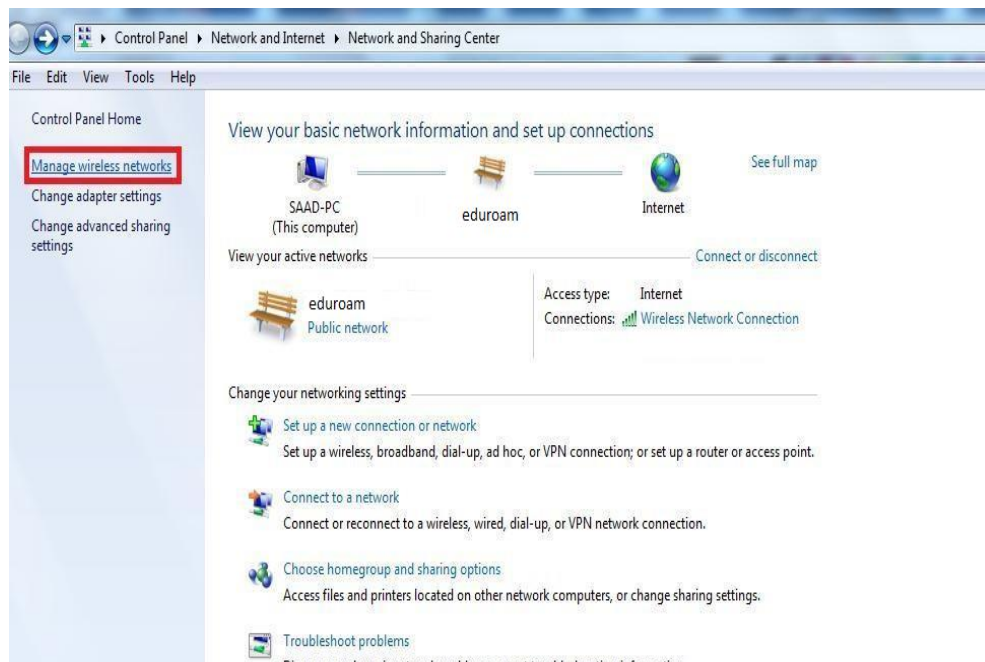


# Windows 7 Configuration of eduroam Connectivity Manual

- Open 'Network and Sharing'



- Go to 'Manage Wireless Networks'

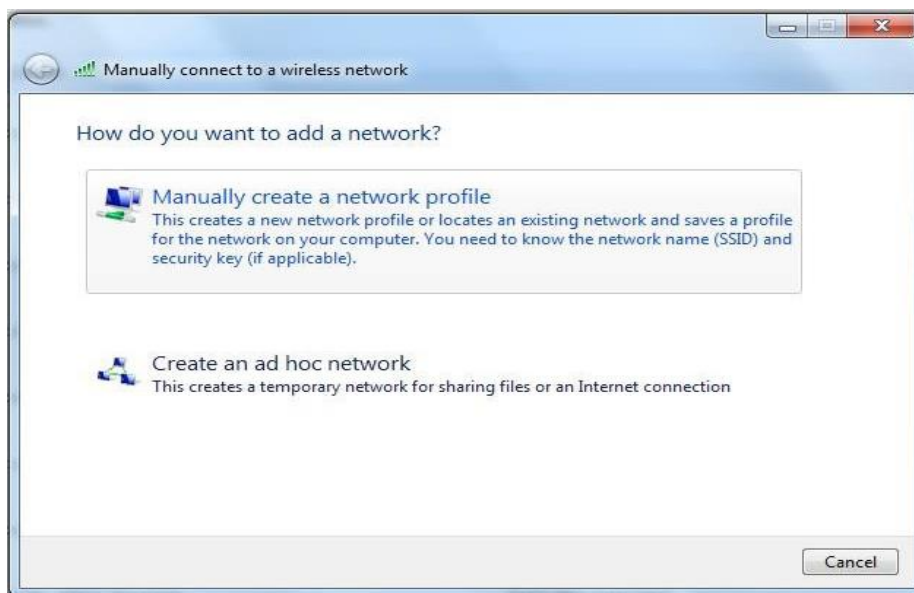




- Click on 'Add'

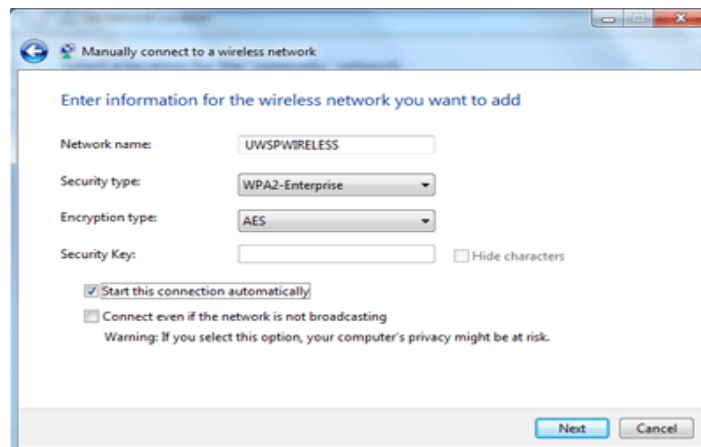


- Choose 'Manually Create a network profile'



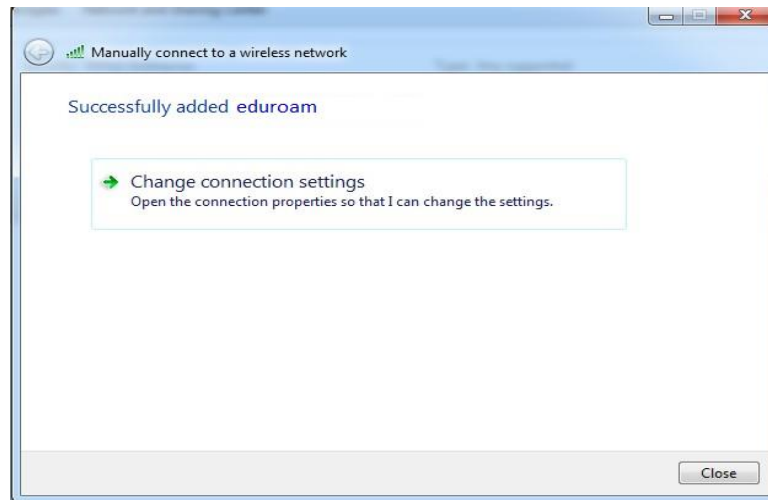
On network name write "Eduroam"

- Security type 'WPA2-Enterprise'
- Encryption Type 'AES'
- Leave Security Key 'Blank'
- Click on 'Next'



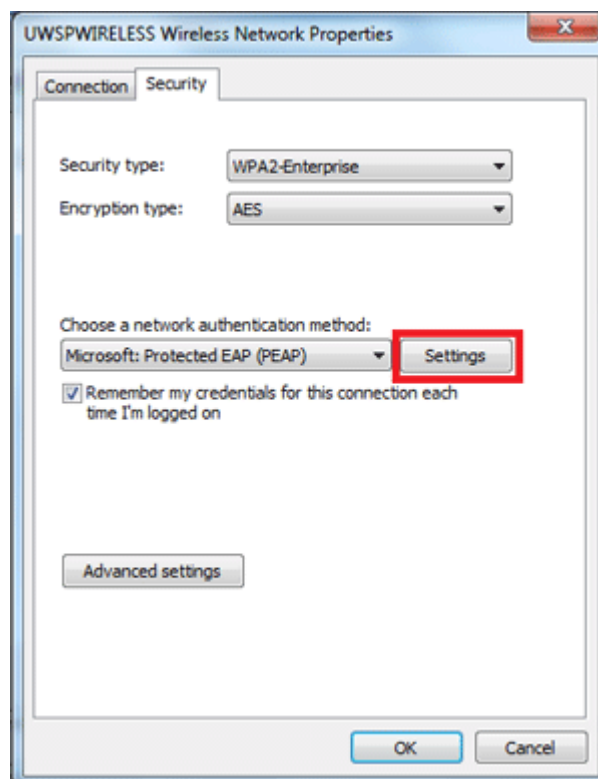


- Go to 'Change Connection Setting'

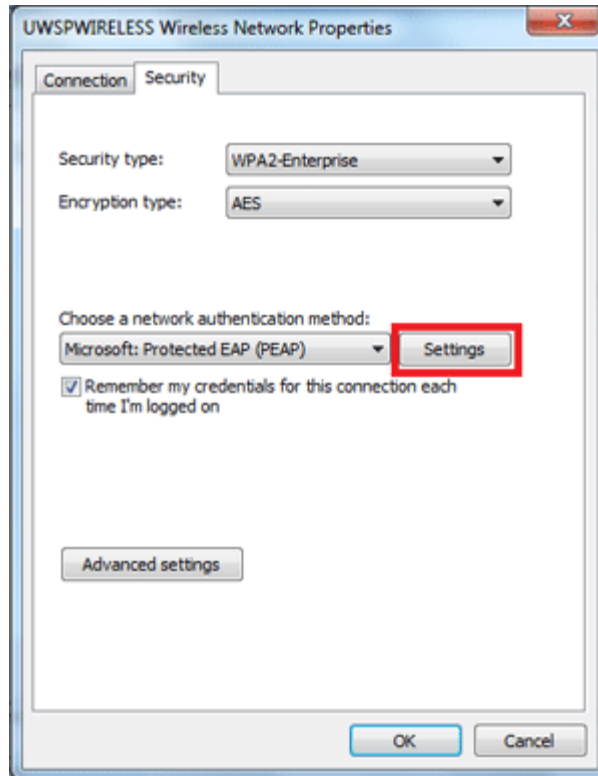


### Select Security Type 'WPA2-Enterprise'

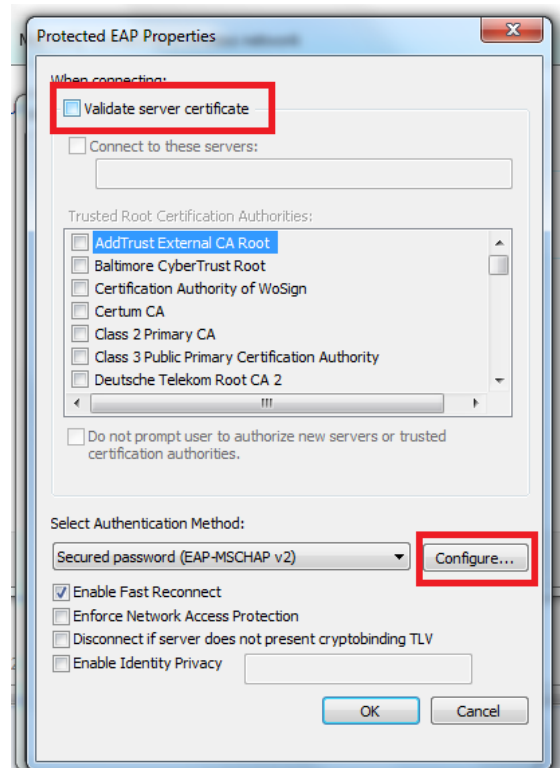
- Encryption Type 'AES'
- Network Authentication Method: Microsoft: Protected EAP (PEAP) and then click setting



- Go to 'Security' Tab



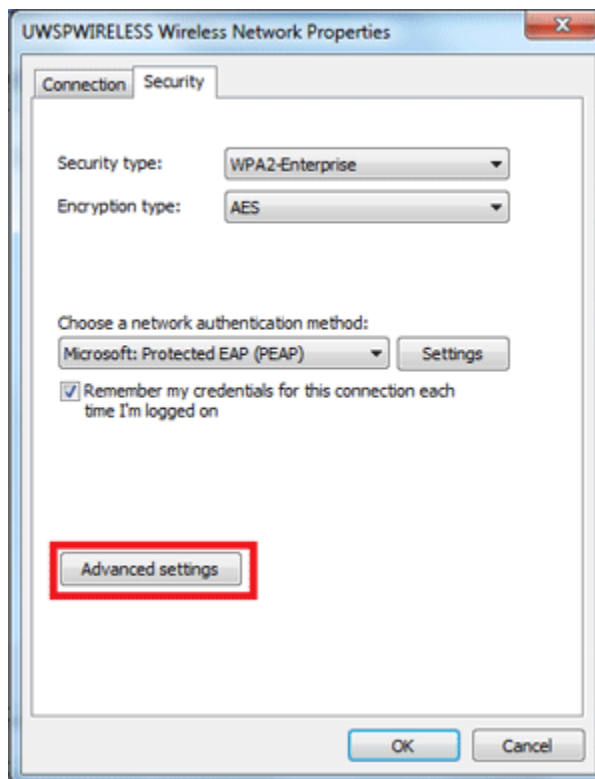
- Uncheck 'Validate server certificate'
- Click on 'Configure'



- Uncheck Automatically use my windows logon name and password (and domain if any) press OK

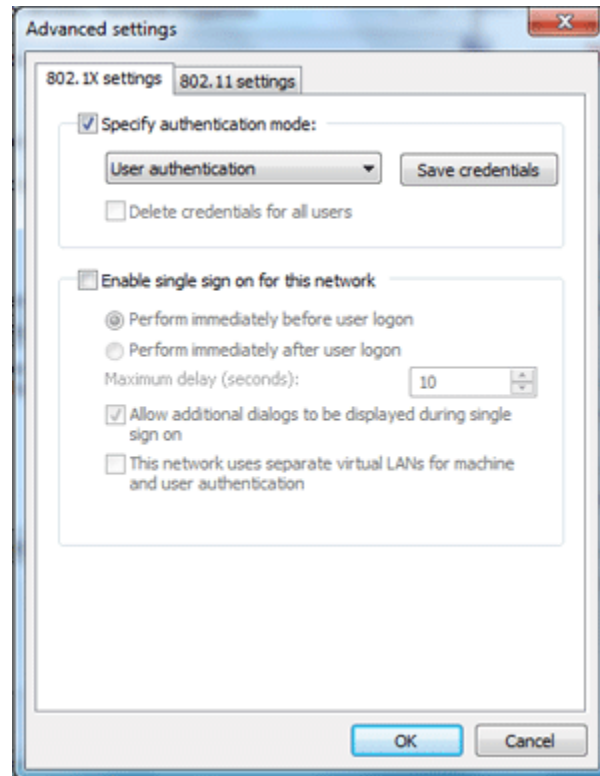


- Press 'Ok'
- Click the 'Advanced Settings' button

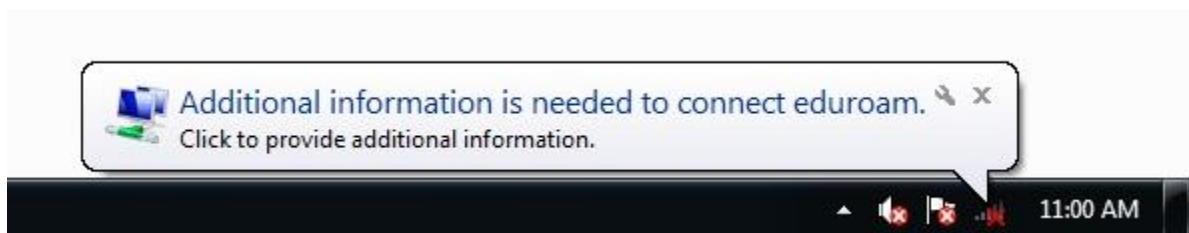




- On the 802.1X settings tab check the 'Specify authentication mode' and set the mode to 'User Authentication'



- Click OK and OK again.
- You should see a bubble like below popup if you are in range of the eduroam network. Click the bubble.



- Type your domain username and password,



- Enter your Institute ID and Password. Your user ID must be appended with @cuilahore.edu.pk (e.g. ahmad.tauqeer@cuilahore.edu.pk).

