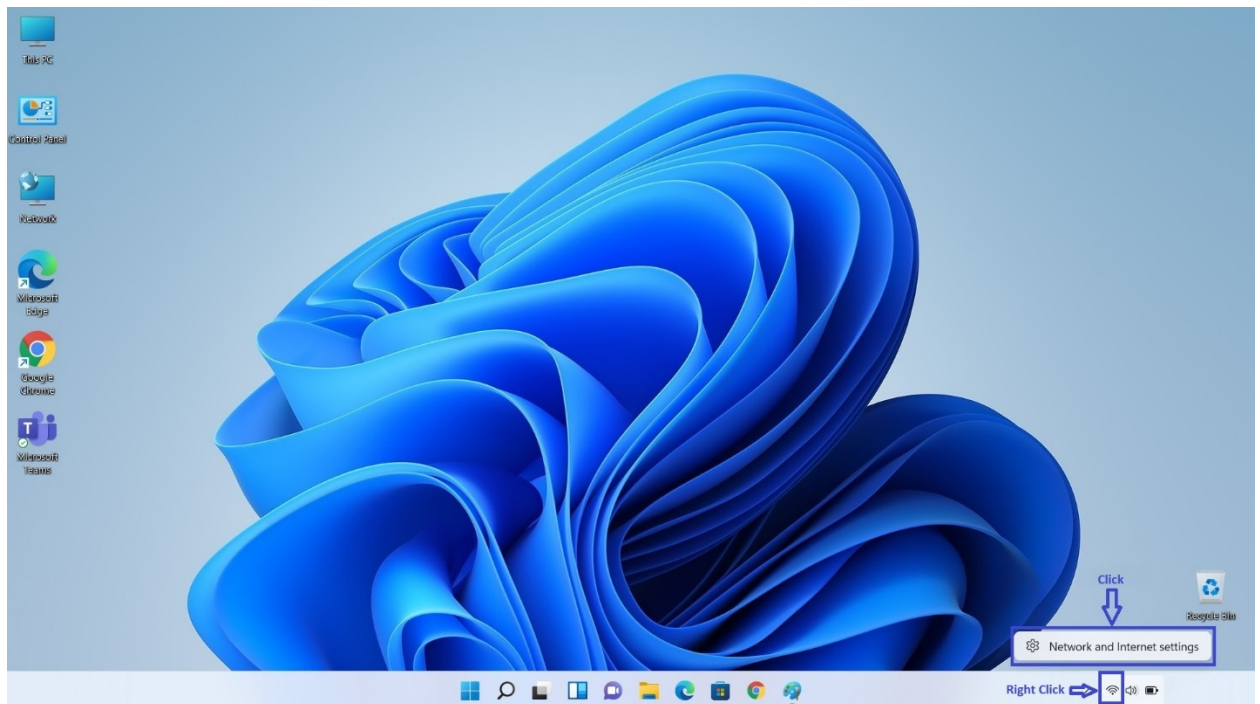




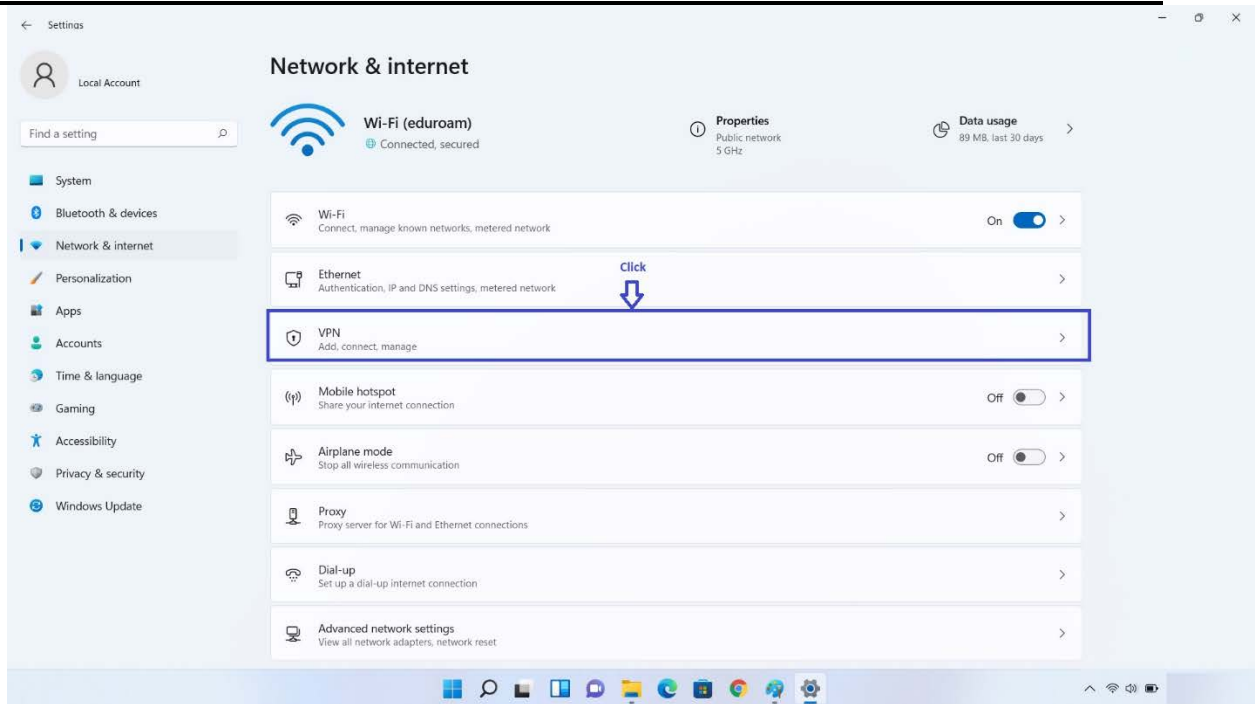
## How to set up VPN connection on Windows 11

To set up a Windows 11 VPN connection, use these steps:

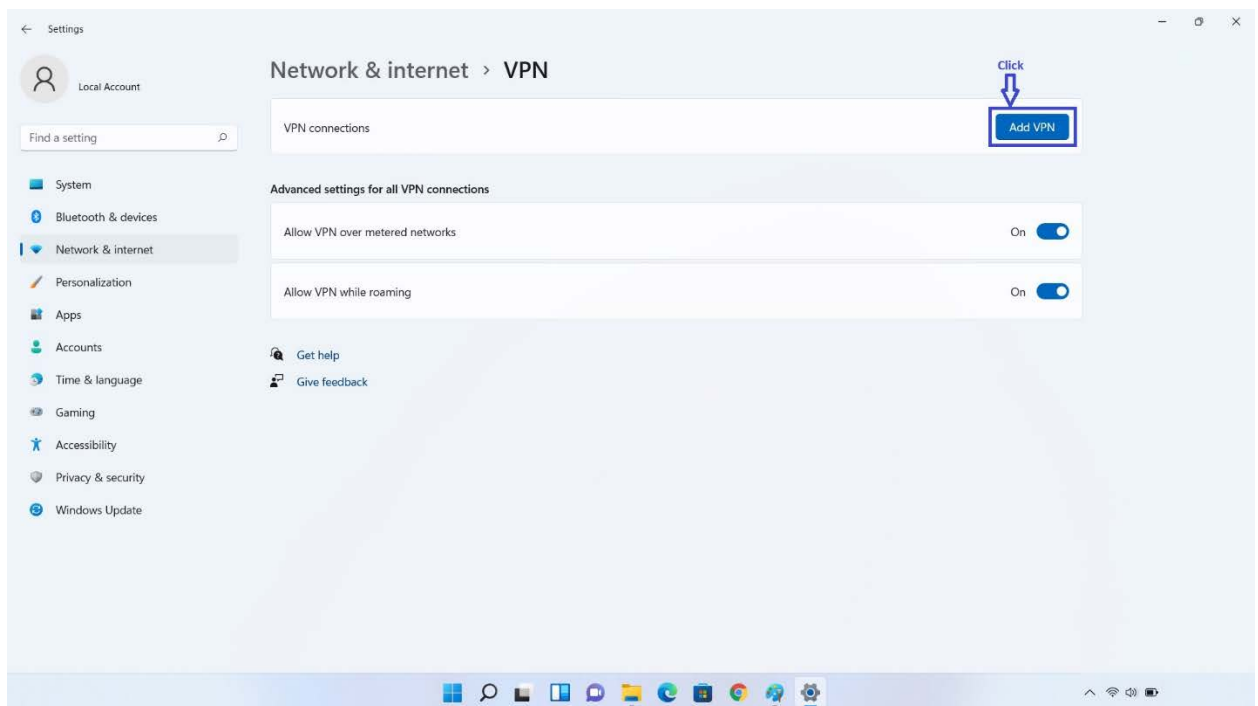
1. Open **Settings** or “Windows + I” shortcut keys.



2. Click on **Network & internet**.
3. Click the **VPN** page from the right side.



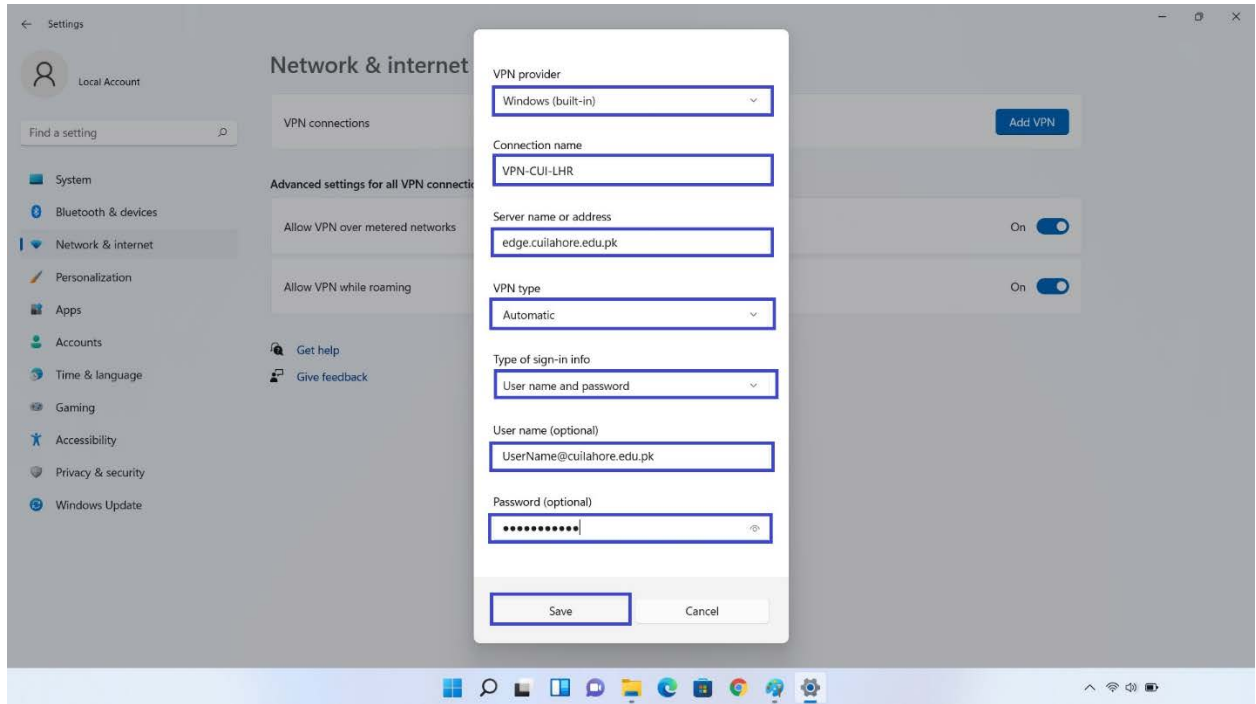
4. In the "VPN connections" setting, click the **Add VPN** button.



5. Use the "VPN provider" drop-down menu and select the **Windows (built-in)** option.



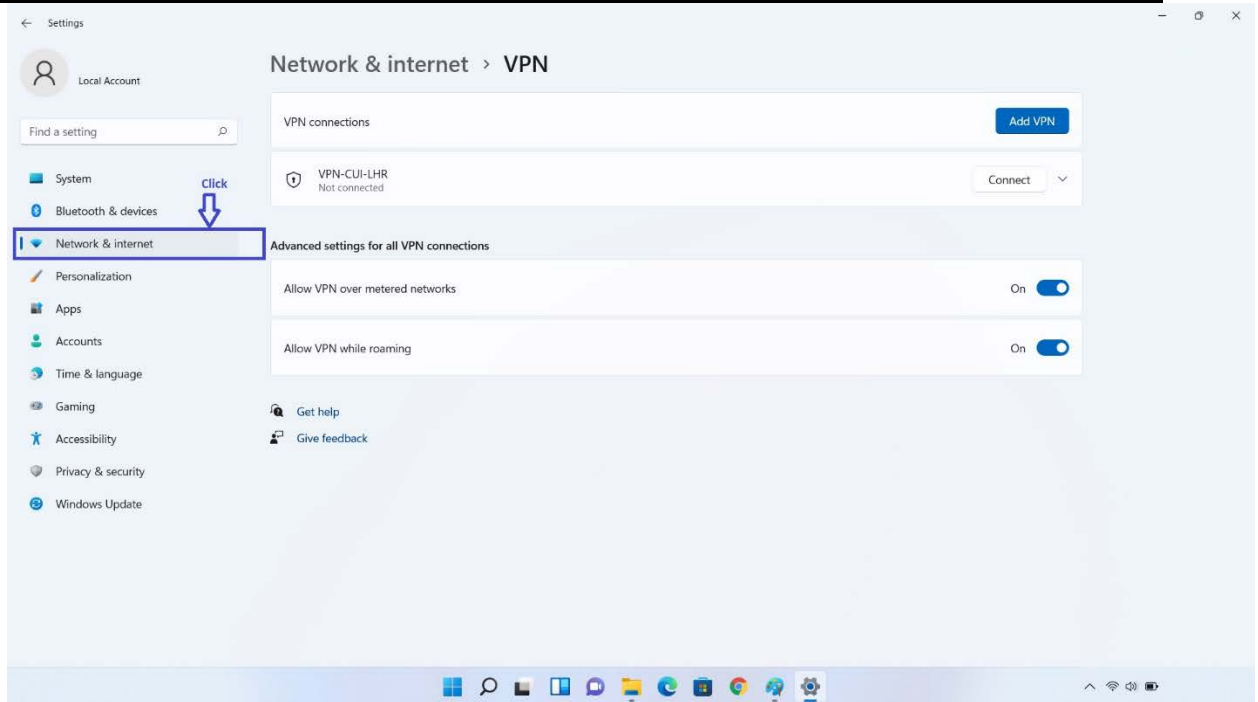
6. In the "Connection name" setting, enter a name to identify the connection — for example, you can use the service name like My VPN Service, VPN CUI-LHR, etc.
7. In the "Server name or address" setting, enter the address of the VPN server — for example, edge.cuilahore.edu.pk



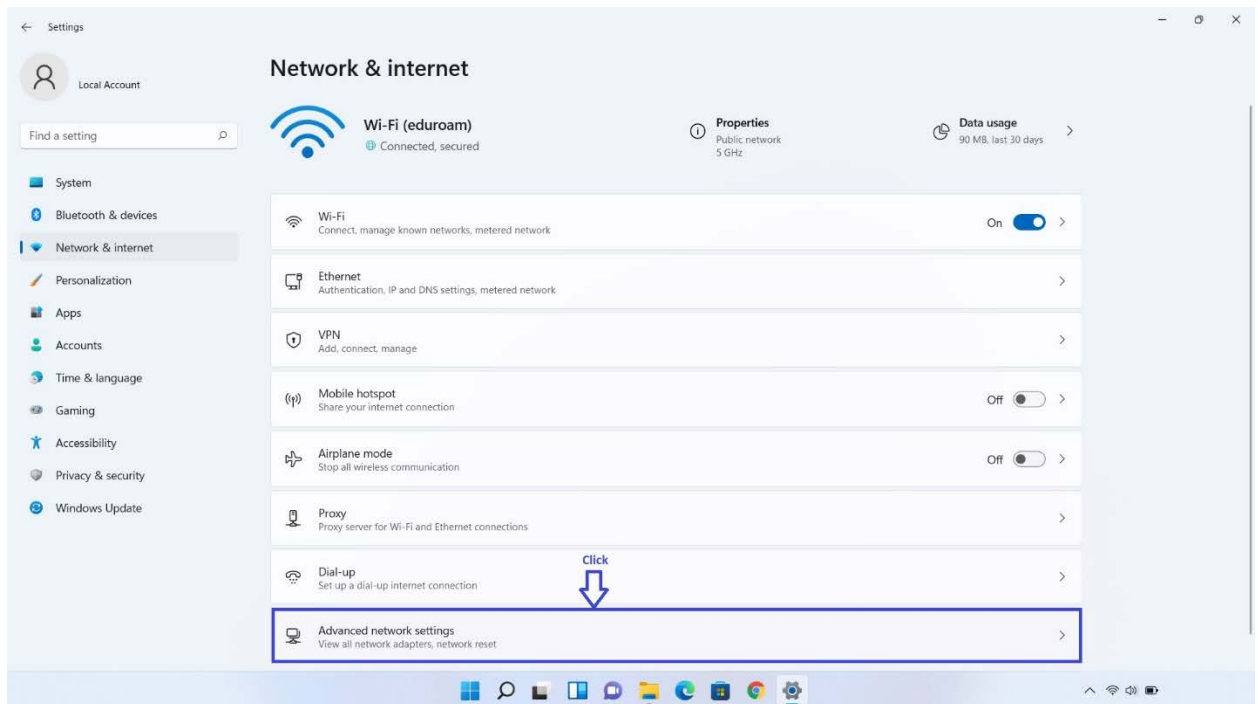
8. Use the "VPN type" drop-down menu and select the **Automatic** option.
9. Use the "Type of sign-in info" drop-down menu and select the authentication method.

**Quick note:** This option will depend on the VPN provider settings.

10. Confirm the username and password if you select the "User name and password" option.
11. Click the **Save** button.
12. Click on **Network & internet**.

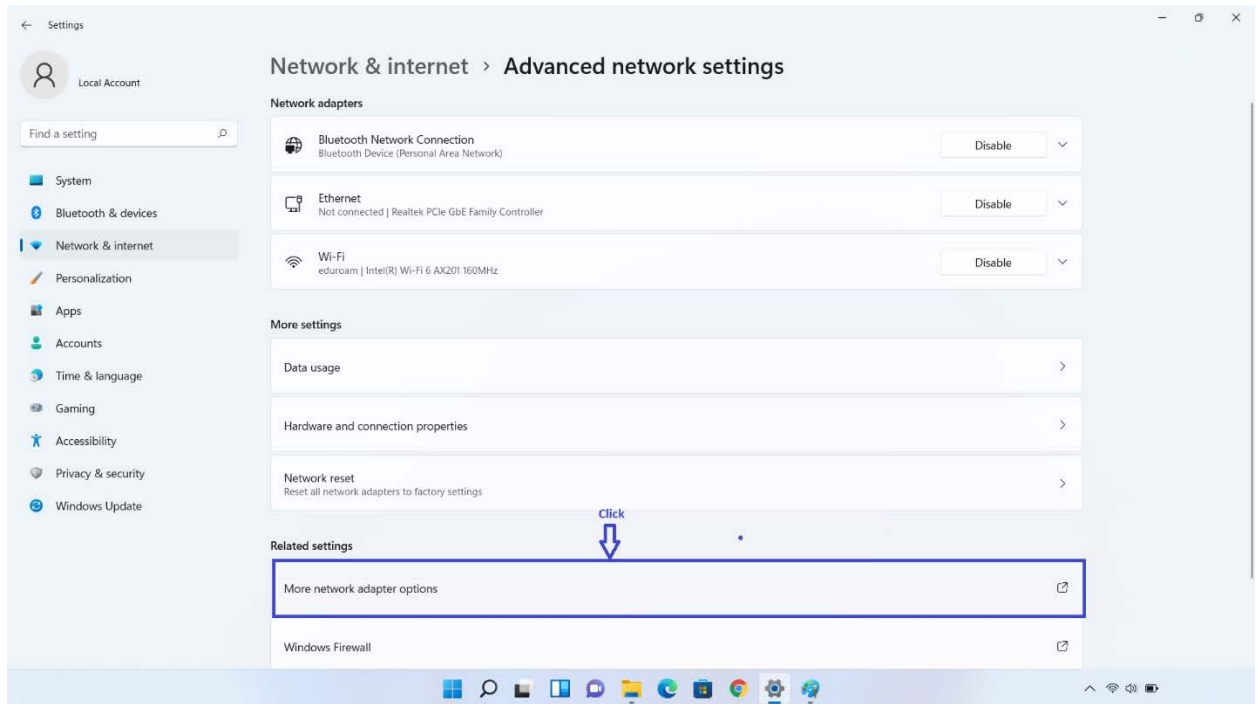


13. Click on **Advance network & setting.**



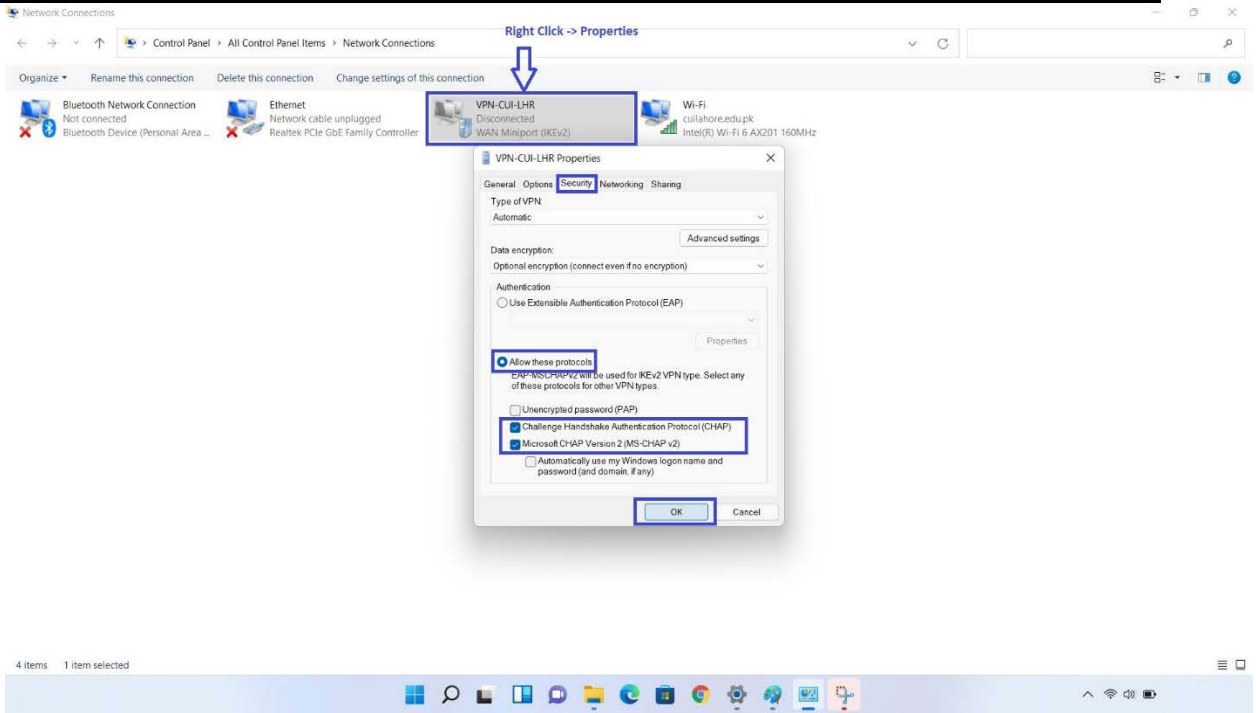


14. Click on **More network adopter options**.

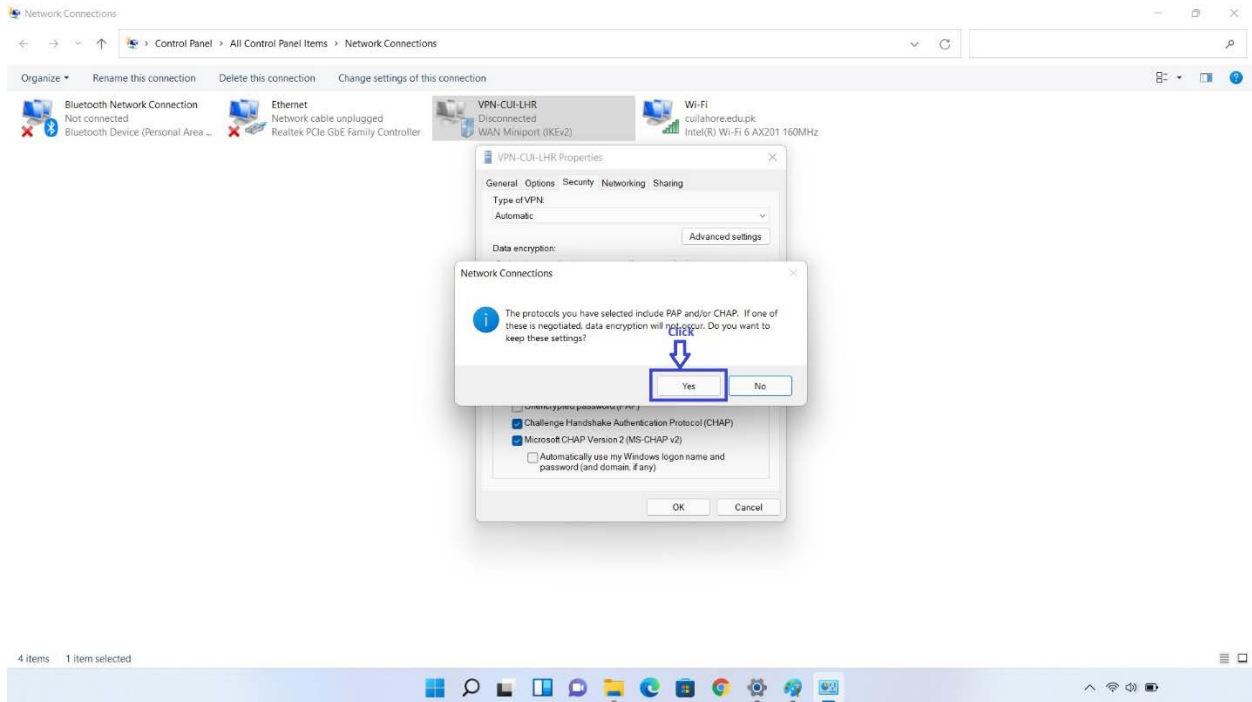


15. Right Click on VPN-CUI-LHR → Properties → Select **Security** and allow the following protocols.

1. Challenge Handshake Authentication Protocol (CHAP)
2. Microsoft CHAP Version 2 (MS-CHAP v2)



## 16. Click on Yes



1. Click on **Network & internet** → **Connect**.



## Information Technology & Services

The screenshot displays the Windows Settings application, specifically the 'Network & internet > VPN' section. The left-hand navigation pane shows various system settings, with 'Network & internet' highlighted and a blue box around it. A blue arrow labeled 'Click' points to this menu item. In the main content area, under 'VPN connections', there is a list of VPNs. One VPN, 'VPN-CUI-LHR', is listed with the status 'Not connected'. A blue box highlights the 'Connect' button next to this VPN, with another blue arrow labeled 'Click' pointing to it. Below the VPN list, there are 'Advanced settings for all VPN connections' with two toggle switches: 'Allow VPN over metered networks' and 'Allow VPN while roaming', both currently turned 'On'. At the bottom of the window, the Windows taskbar is visible with various application icons and system tray icons.